



2 G.G. s.r.l.
unipersonale



K I R M A N

AS REAL LEATHER, JUST BETTER.



MEMBER OF
GIOVARDI
TEXTILE EXPERIENCE



Applicazioni
Anwendungen
Applications
Application



OUTDOOR



INDOOR



CONTRACT



MARINE



AUTOMOTIVE

Caratteristiche
Funktionen
Caractéristiques
Features



Qualità
duratura

Langlebige
Qualität

Qualité
durable

Durability
performance



Resistenza alla
screpolatura
dovuta al freddo

Beständigkeit gegen
Kaltrissbildung

Résistance
à la fissuration
par le froid

Resistance to
cold cracking



Resistenza
all'idrolisi

Hydrolyse-
beständigkeit

Résistance
à l'hydrolyse

Resistance
to hydrolysis



Resistenza
a raggi UV

UV- und
Lichtechtheit

Résistance
aux UV et à
la décoloration

UV and fade
resistance



Trattamento
antibatterico

Antibakteriell

Antibactérien

Antibacterial



Resistenza
al fuoco

Feuerbeständigkeit

Résistance
au feu

Ignifugation



Impermeabilità

Wasserdicht

Imperméabilisation

Waterproof



Rispetto
dell'ambiente

Respektieren
Sie die Umwelt

Respecter
l'environnement

Respects the
environment

Pulizia e cura
Reinigung und Pflege
Nettoyage et entretien
Cleaning and care



WASH



BLEACH



DRY



DRY



DRYCLEAN



IRON

Lavare con acqua leggermente saponata e tamponare con un panno morbido.

Si sconsiglia l'utilizzo di detersivi aggressivi perché potrebbero alterare l'aspetto e la durata del prodotto.

Verwenden Sie zur Reinigung eine milde Seifenlauge mit einem weichen Tuch.

Bitte keine scharfen Mittel verwenden!

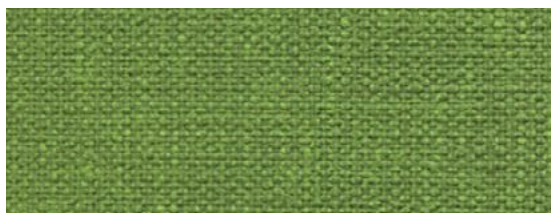
Utilisez une solution de savon doux avec un chiffon doux pour le nettoyage.

N'utilisez pas d'agents agressifs!

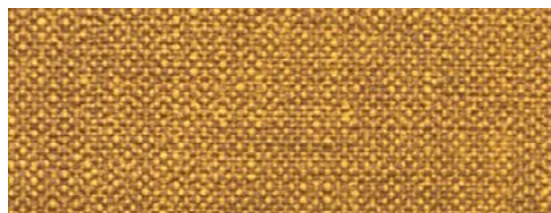
Use a mild soapy water solution with a soft cloth for cleaning.

Please do not use any aggressive agents!

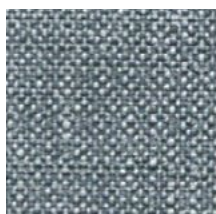




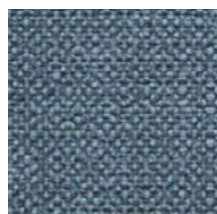
016



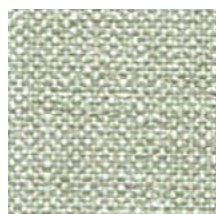
057



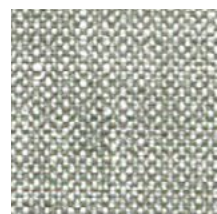
8087



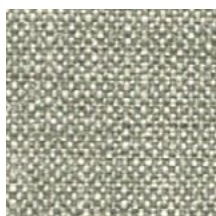
8085



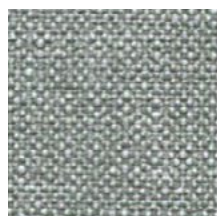
017



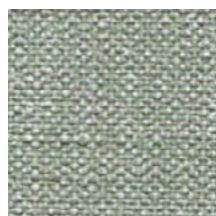
020



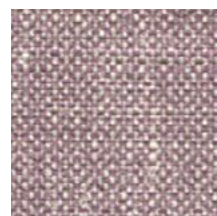
019



2271



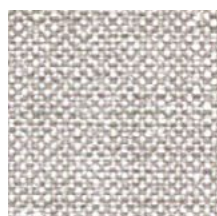
7088



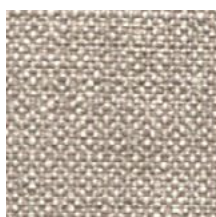
1584



7089



2270



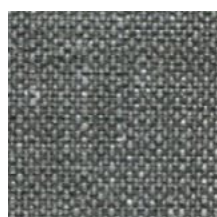
2272



2267



2269



2266



Scheda tecnica Technische Spezifikationen Propriétés techniques Technical specifications	Finta pelle Kunstleder Similicuir Vinyl	Kirman Kirman Kirman Kirman	
Caratteristiche Merkmale Caractéristiques Characteristics	Unità Einheit Unités Units	Metodo Methode Méthode Method	Valori Werte Valeur Value
Composizione · Zusammensetzung Composition · Composition		PVC Plastificato Poliestere	92,4% 7,6%
Peso · Gewicht Poids · Weight	g/m ²	UNI EN ISO 2286-2	750 ± 50
Spessore · Dicke Epaisseur · Thickness	mm	UNI EN ISO 2286-3	0,80 mm +/- 0,15
Altezza del rotolo · Rollenlänge Longueur du rouleau · Roll length	cm	UNI EN ISO 2286-1	138-140
Resistenza alla trazione · Zugfestigkeit Résistance à la traction · Tensile strength	N	UNI EN ISO 1421 METODO 1	LONGITUDINALE Lengthwise ≥ 300 TRASVERSALE Crosswise ≥ 200
Allungamento alla rottura · Reißdehnung Allongement sous charge · Elongation at break	%	UNI EN ISO 1421 METODO 1	LONGITUDINALE Lengthwise ≥ 60 TRASVERSALE Crosswise ≥ 130
Determinazione della resistenza all'usura Determination of abrasion resistance Martindale abrader	cicli Zykl. cycles	UNI EN ISO 5470-2	100.000
Solidità del colore allo sfregamento Colour fastness to crocking	Scala dei grigi Grey scale	UNI EN ISO 105 X12	Secco-Dry ≥ 4 Umido-Wet ≥ 4 Alcool ≥ 4
Solidità alla luce Lichtechtheit Résistance à la lumière Light fastness	Scala dei blu Blue scale	UNI EN ISO 105-B02	≥ 7
Reazione al fuoco secondo le norme: Brennverhalten Réaction au feu Reaction to fire according to:	- UNI 9175:2010 CLASSE 1.IM* *articolo testato in abbinamento a schiuma densità 26,5 Kg/m ³ . Schiume diverse possono originare risultati diversi. Item tested with flame retardant foam, density: 26,5 Kg/m ³ . Different foams can give different results. IMO Resolution MSC.307 (88) - FTP CODE 2010 - PART 8 (Cigarette test- Open flame test) -EN 1021-1:2006 Sigaretta in combustione lenta (Smouldering cigarette test) -EN 1021-2:2006 Fiamma equivalente a quella di un fiammifero (Match flame equivalent test) -BS 5852-1:1979 Fiamma equivalente a quella di un fiammifero (Match flame equivalent test)		

Contiene i principi attivi biocidi Tiabendazolo e Folpet per aiutare a proteggere la superficie ed aiutare a prevenire la degradazione causata dalla crescita microbica (in accordo al regolamento UE n. 528/2012).

— Kirman



EDIZIONE 03.2024 - Campioni gratuiti esenti IVA Art. 2/D D.P.R. 633 del 26.10.72

MEMBER OF
GIOVANARDI
TEXTILE EXPERIENCE


2 G.G. s.r.l.
unipersonale

2 G.G. s.r.l. unipersonale
Viale dell'Industria, 39 · 35030 Rubano (PD) · ITALY
Tel. +39 049 633472 · Fax +39 049 633411
Mail: commerciale@2ggsrl.it · P. IVA 04062730280

www.2ggsrl.it